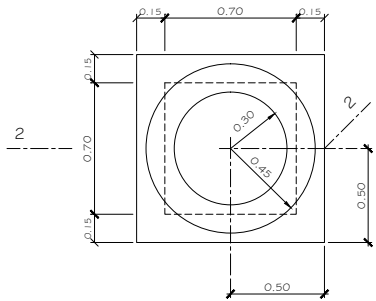


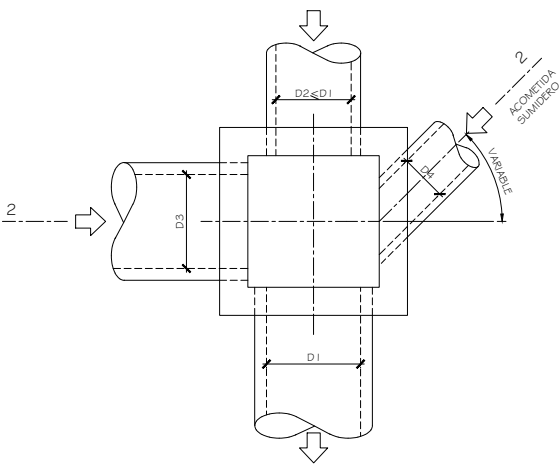
CAMARA PARA LIMPIEZA EN VEREDA
DE 0.70m x 0.70m - Hmax = 1.65m

Escala 1:20

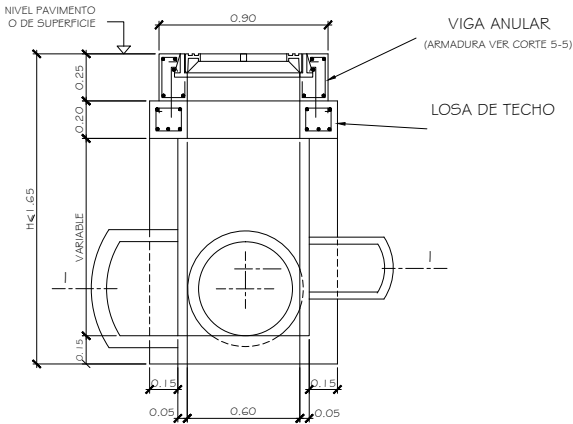
PLANTA



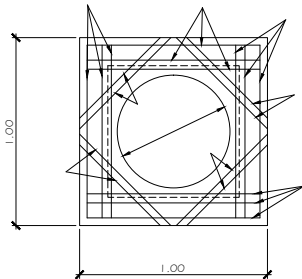
CORTE 1-1



CORTE 2-2



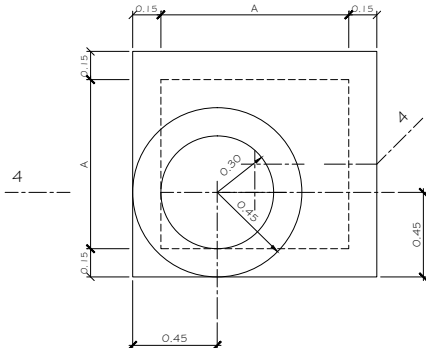
LOSA DE TECHO
(MALLA INFERIOR)



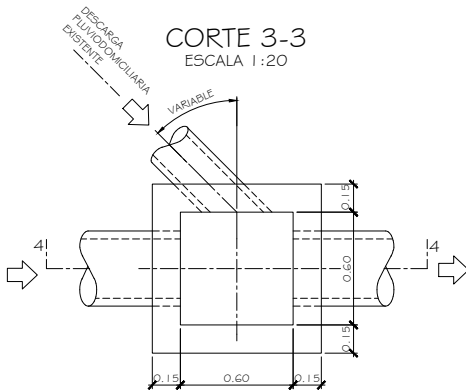
CAMARA PARA LIMPIEZA DE
1.00m x 0.90m a 1.40m x 1.30m

Escala 1:20

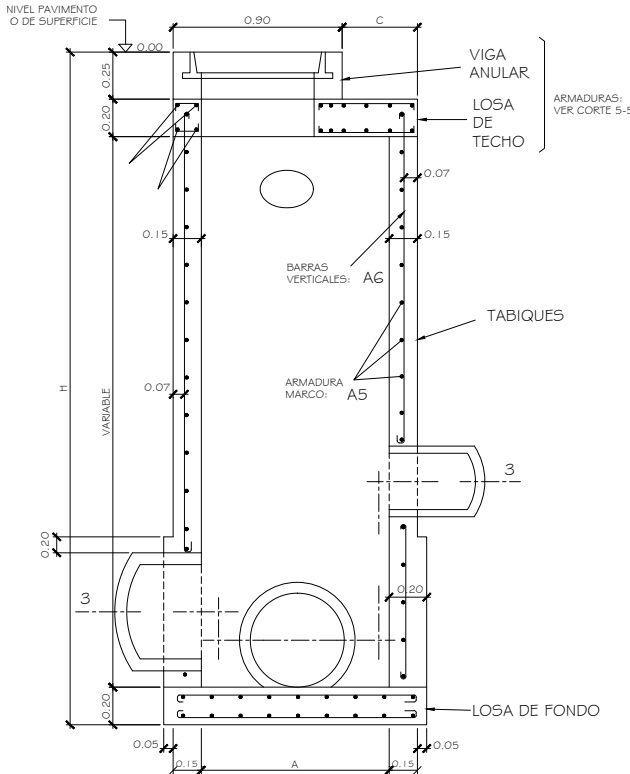
PLANTA



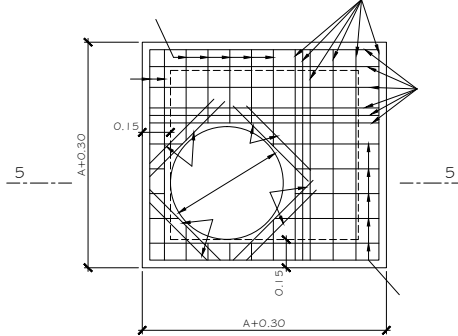
CORTE 3-3
ESCALA 1:20



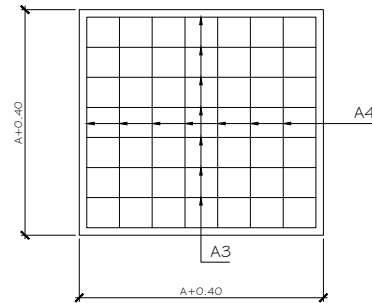
CORTE 4-4



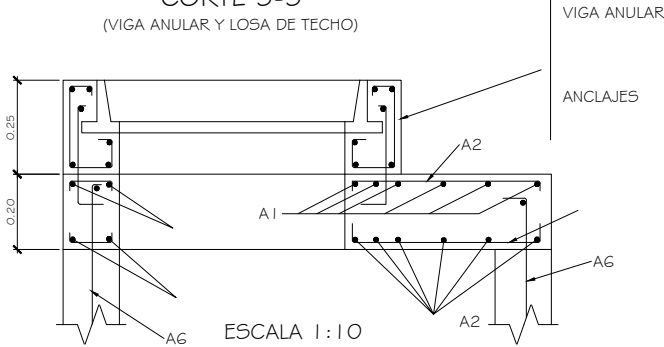
LOSA DE TECHO
(MALLA INFERIOR)



LOSA DE FONDO
(MALLAS INFERIOR Y SUPERIOR)



CORTE 5-5
(VIGA ANULAR Y LOSA DE TECHO)



| DIMENSIONES CAMARAS | | | | | |
|---------------------|-------|-----------|--------|-----------|-----------|
| A (m) | C (m) | D1 (m) | D2 (m) | D3 (m) | D4 (m) |
| 0.70 | --- | MAX: 0.50 | ≤ D1 | MAX: 0.50 | MAX: 0.40 |
| 1.00 | 0.40 | MAX: 0.80 | ≤ D1 | MAX: 0.70 | MAX: 0.40 |
| 1.10 | 0.50 | MAX: 0.90 | ≤ D1 | MAX: 0.80 | MAX: 0.50 |
| 1.20 | 0.60 | MAX: 1.00 | ≤ D1 | MAX: 0.90 | MAX: 0.50 |
| 1.40 | 0.80 | MAX: 1.20 | ≤ D1 | MAX: 1.00 | MAX: 0.60 |

| ARMADURAS CAMARAS | | | | | | | |
|-------------------|-------|----|----|----|----|----|----|
| A (m) | C (m) | A1 | A2 | A3 | A4 | A5 | A6 |
| 1.00 | 0.40 | | | | | | |
| 1.10 | 0.50 | | | | | | |
| 1.20 | 0.60 | | | | | | |
| 1.40 | 0.80 | | | | | | |

NOTAS

- * LAS MEDIDAS LINEALES SE EXPRESAN EN METROS
- * LA CAMARA DE 0.70m x 0.70m, SE EMPLEARA SOLAMENTE PARA PROFUNDIDADES "H" MENORES DE 1.65m
- * LOS RECUBRIMIENTOS DE ARMADURA, QUE NO SE INDICAN, SERAN DE 0.03m
- * EL HORMIGON A EMPLEAR SERA H-2 I Y EL ACERO EN BARRAS ADN-420 O ADM-420
- * PLANO PT-148 Y/O ESPECIFICACIONES TECNICAS
- * LA MALLA SUPERIOR DE LA LOSA DE FONDO, CORRESPONDIENTE A CAMARAS DE DIMENSIONES INTERNAS MAYORES A 0.70m x 0.70m, SE COLOCARA SOLAMENTE PARA PROFUNDIDADES H > 4.00m
- * ANTECEDENTE: PLANO TIPO PT 135-M1 (DEPIS)